

May 13, 2019

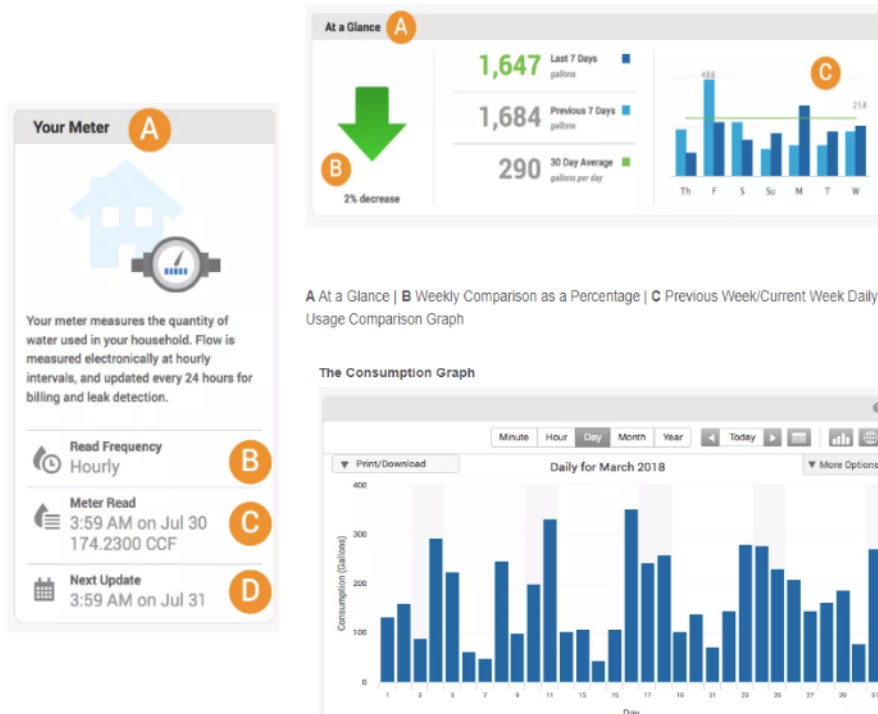
Eye On Water

Press Release

After creating an Eye On Water account, residents will be able to access information found in the system. Taking a look at the Eye On Water Website Welcome page, residents can view the following sections: Leaks, At a Glance, Your Meter, Consumption Graph, and Export Data. The “At a Glance” section of the dashboard can let residents see if they are using more or less water than the previous seven days. Under “Your Meter,” residents can see how often the meter is read, the last time it was read, the current reading and when the next reading is scheduled. The “Consumption Graph” allows residents to see water use for a period of time. The graph defaults to displaying the resident’s daily water use. The buttons located along the top of the graph allow residents to change the timeframe to minutes, hours, days, weeks, and months. For more information on how to navigate the Eye On Water Website Welcome Page, please visit <https://helpeyeonwater.com/2018/05/23/using-eyeonwater/> .



A Welcome | B Leaks | C At a Glance | D Your Meter | E Consumption Graph | F Export Data



A At a Glance | B Weekly Comparison as a Percentage | C Previous Week/Current Week Usage Comparison Graph