

City of Thibodaux

LDBG-CV HVAC

**Construction and
Contingencies**

Environmental Review

12-Airport Hazards

Identified in the map are

- Barksdale Airforce Base (A) 251 miles from Thibodaux
- Polk Army Airfield (B) 207 miles from Thibodaux
- Naval Air Station Joint Reserve Base New Orleans (C) 63 miles from Thibodaux



About 372,000 results (0.66 seconds)

251 mi

Distance from Thibodaux to Barksdale AFB

Map data ©2022 Google, INEGI

<https://www.distance-between.com> › louisiana › louisiana

Distance between Barksdale Air Force Base, LA and...

Find the distance between Barksdale Air Force Base, Louisiana and any city in Louisiana.

<https://www.distance-between.com> › louisiana › louisiana

Distance Between Barksdale Air Force Base, LA to Benton, LA

The straight line distance from Barksdale Air Force Base, Louisiana to Benton, Louisiana is 14.22 miles. The straight line distance is the shortest distance ...

People also ask

Is Barksdale AFB a good base?

Is Barksdale AFB a nuke base?

What is Barksdale AFB known for?

Is Barksdale AFB the largest?

Feedback

<https://www.distantias.com> › what-is-the-nearest-beach-t...

Nearest Public Beaches to Barksdale Afb (Louisiana)

The closest beach as the crow flies to Barksdale Afb is North Beach - Lake Charles which is in CALCASIEU, LA and is 157.89 miles away.

<https://www.rome2rio.com> › Thibodaux › Shreveport

How to get from Thibodaux to Shreveport by bus, car or plane

The cheapest way to get from Thibodaux to Shreveport costs only \$67, ... Thibodaux and Shreveport is around 8h 40m and covers a distance of around 356 miles ...

What is the most cost-effective way to get from Thibodaux to Shreveport?

What is the fastest way to get from Thibodaux to Shreveport?

<https://distances.io> › flying › couchatta-la › thibodaux-la

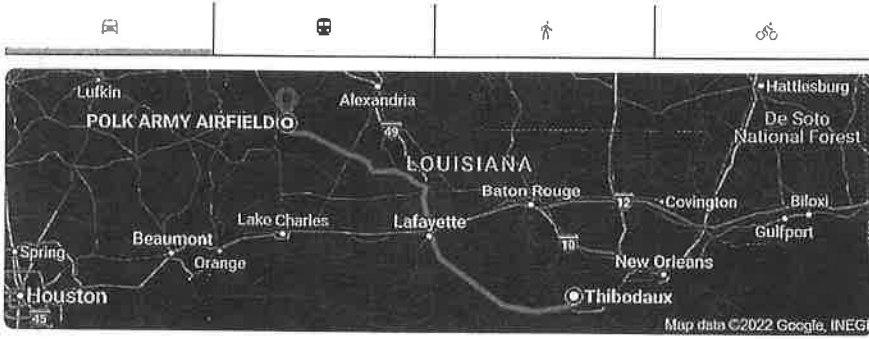
Flying distance from Couchatta, LA to Thibodaux, LA - Distances.io

Flying distance between Couchatta, LA and Thibodaux, LA is 214 miles, and estimated ... The nearest airport to Couchatta, LA is Barksdale Air Force Base, ...

About 335,000 results (0.69 seconds)

Thibodaux, Louisiana 70301

POLK ARMY AIRFIELD, Pitkin, LA 70656



3 hr 44 min (207.2 mi) via US-90 W/Hwy 90 E and LA-10 W



3 hr 48 min (221.2 mi) via US-90 W/Hwy 90 E

3 hr 56 min (211.6 mi) via LA-10 W

https://www.distance-cities.com > distance-fort-polk-la-t... ;

Distance from Fort Polk, LA to Thibodaux, LA

There are 166.93 miles from Fort Polk to Thibodaux in southeast direction and 254 miles (408.77 kilometers) by car, following the I-10 route. Fort Polk and ...

Missing: airfield | Must Include: airfield

https://www.distantias.com > ... > Nearest Airports ;

Airports near Thibodaux (Louisiana) United States - Distantias

Nearest airports to Thibodaux (Louisiana) within a 50 mile distance (80.45 km) , typically within a one to two hour commute or drive. You can also calculate ...

People also ask ;

What is the closest city to Fort Polk Louisiana?

How far is Fort Polk from the Gulf?

Is Fort Polk Louisiana still open?

How far away is New Orleans Fort Polk?

Feedback

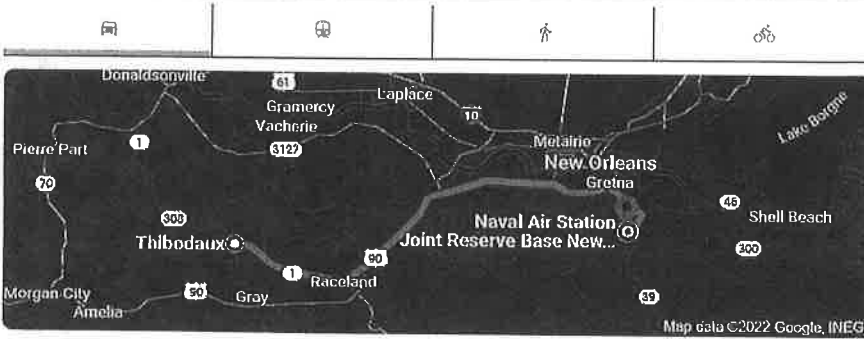
https://www.louisiana-destinations.com > leesville ;

Leesville Louisiana and Fort Polk travel information, things to ...

About 196,000 results (0.86 seconds)

📍 Thibodaux, Louisiana 70301

📍 Naval Air Station Joint Reserve Base New Orleans, 400 Russell Dr, New Orleans, LA 70114



1 hr 29 min (63.4 mi) via US-90 E



1 hr 31 min (72.5 mi) via LA-308 S

1 hr 32 min (77.2 mi) via LA-3127 S

<https://www.travelmath.com/driving-time/Thibodaux...>

Driving Time from NBG to Thibodaux, LA - Travelmath

How long is the drive from NBG to Thibodaux, LA? The total driving time is 1 hour, 37 minutes. Your trip begins at Naval Air Station Joint Reserve Base New ...

<https://installations.militaryonesource.mil/naval-air-sta...>

Naval Air Station Joint Reserve Base New Orleans

Mission. Naval Air Station (NAS) Joint Reserve Base (JRB) New Orleans is one of the most unusual military air facilities in the United States.

Missing: thibodaux | Must Include: thibodaux

<https://milesofme.com/thibodaux-la>

Cities 100 miles of Thibodaux - Miles of Me

Cities within 100 miles of Thibodaux ; 78 miles: Lafayette, LA ; 37 miles: Kenner, LA ; 44 miles: Marrero, LA ; 61 miles: New Iberia, LA ; 15 miles: Houma, LA.

https://en.wikipedia.org/wiki/Naval_Air_Station_Joi...

Naval Air Station Joint Reserve Base New Orleans - Wikipedia

Naval Air Station Joint Reserve Base New Orleans is a base of the United States military ... miles (6 km) south of the central business district of New Orleans.

Missing: thibodaux | Must Include: thibodaux

<https://www.waze.com/live-map/directions/naval-a...>

Naval Air Station Joint Reserve Base New Orleans - Waze

Realtime driving directions to Naval Air Station Joint Reserve Base New Orleans, 400 Russell Dr, Belle Chasse, based on live traffic updates and road ...



Airports
My AirNav

Nav aids

Airspace Fixes

Aviation Fuel

Hotels

iPhone App

1548 users online [LOGIN](#)

Search Airports

Airports matching: THIBODAUX

5 airports found

ID	City	Name	Remarks
<u>L83</u>	Thibodaux, LA, USA	Thibodaux Municipal Airport	
<u>8LA0</u>	Thibodaux, LA, USA	Transco Schriever Heliport	Private
<u>0LS0</u>	Thibodaux, LA, USA	Theriot Field Airport	Private
<u>LA59</u>	Thibodaux, LA, USA	Thibodaux Regional Medical Center Heliport	Private
<u>50LA</u>	Thibodaux, LA, USA	Louisiana State Police Troop C Heliport	Private

- Airports
 - Nav aids
 - Airspace Fixes
 - Aviation Fuel
 - Hotels
 - iPhone App
- [My AirNav](#)

1523 users online [LOGIN](#)

L83 Thibodaux Municipal Airport

Thibodaux, Louisiana, USA



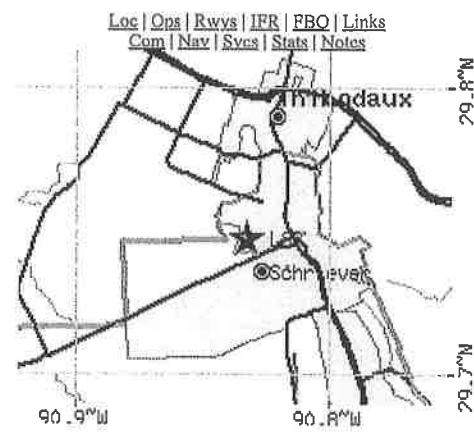
GOING TO THIBODAUX?

[Reserve a Hotel Room](#)

FAA INFORMATION EFFECTIVE 14 JULY 2022

Location

FAA Identifier: L83
 Lat/Long: 29-44-52.0510N 090-49-58.4360W
 29-44.867517N 090-49.973933W
 29.7477919,-90.8328989
 (estimated)
 Elevation: 9 ft. / 2.7 m (surveyed)
 Variation: 02E (1995)
 From city: 3 miles S of THIBODAUX, LA
 Time zone: UTC -5 (UTC -6 during Standard Time)
 Zip code: 70395



Road maps at: [MapQuest](#) [Bing](#) [Google](#)

Airport Operations

Airport use: Open to the public
 Activation date: 09/1972
 Control tower: no
 ARTCC: HOUSTON CENTER
 FSS: DE RIDDER FLIGHT SERVICE STATION
 NOTAMS facility: DRI (NOTAM-D service available)
 Attendance: 0800-1700
 FOR ARPT ATND AFT HRS CALL 985-209-4697.
 Wind indicator: lighted
 Segmented circle: no
 Lights: REIL RWY 08/26; MIRL RWY 08/26 PRESET LOW INTST; TO INCR INTST ACTVT - CTAF.
 Beacon: white-green (lighted land airport)
 Operates sunset to sunrise.

Aerial photo



Do you have a better or more recent aerial photo of Thibodaux Municipal Airport that you would like to share? If so, please [send us your photo](#).

Sectional chart

Airport Communications

CTAF/UNICOM: 122.8
 NEW ORLEANS APPROACH: 118.9
 NEW ORLEANS DEPARTURE: 118.9
 WX AWOS-3PT at HUM (14 nm SE): 120.25 (985-876-4055)

Nearby radio navigation aids

VOR radial/distance	VOR name	Freq	Var
TBDr356/5.0	TIBBY VOR/DME	112.00	02E
RQRr210/24.0	RESERVE VOR/DME	110.80	02E

Airport Services

Fuel available: 100LL
 Parking: tiedowns
 Airframe service: MINOR
 Powerplant service: MINOR
 Bottled oxygen: NONE
 Bulk oxygen: NONE

Runway Information

Runway 8/26

Dimensions: 2999 x 75 ft. / 914 x 23 m
 Surface: asphalt, in good condition
 Weight bearing capacity: Single wheel: 6.0
 Runway edge lights: medium intensity

RUNWAY 8

Latitude: 29-44.839333N
 Longitude: 090-50.256283W
 Elevation: 7.0 ft.
 Traffic pattern: left
 Runway heading: 082 magnetic, 084 true

Displaced threshold: no

Markings: nonprecision, in fair condition

Runway end identifier lights: yes

Touchdown point: yes, no lights

Obstructions: 79 ft. trees, 637 ft. from
 runway, 132 ft. right of
 centerline, 5:1 slope to clear

RUNWAY 26

29-44.895050N
 090-49.692967W
 9.0 ft.
 left
 262 magnetic, 264
 true
 90 ft.

nonprecision, in
 fair condition
 yes

yes, no lights
 45 ft. trees, 799 ft.
 from runway, 13:1
 slope to clear

APCH RATIO 14:1
 TO DSPLCD THR.

Airport Ownership and Management from official FAA records

Ownership: Publicly-owned

Owner: CITY OF THIBODAU

PO BOX 5418

THIBODAU, LA 70302-5418

Phone 985-446-7218

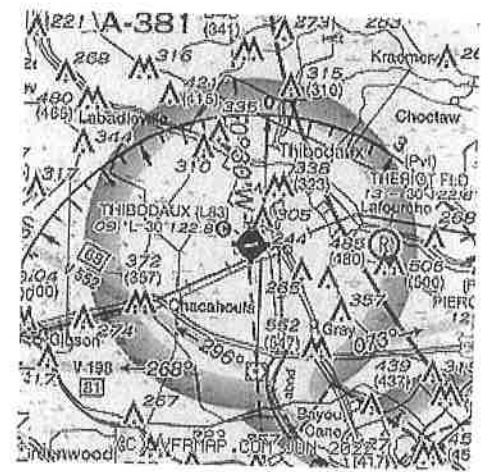
Manager: ROLAND SOIGNET

PO BOX 5418

THIBODAU, LA 70302-5418

Phone 985-446-7208

Airport Operational Statistics



Airport distance calculator

Flying to Thibodaux Municipal Airport? Find the distance to fly.

From _____ to L83

▶ CALCULATE DISTANCE

Sunrise and sunset

Times for 08-Aug-2022

	Local (UTC-5)	Zulu (UTC)
Morning civil twilight	06:02	11:02
Sunrise	06:28	11:28
Sunset	19:50	00:50
Evening civil twilight	20:15	01:15

Current date and time

Zulu (UTC)	08-Aug-2022 21:52:01
Local (UTC-5)	08-Aug-2022 16:52:01

METAR

KHUM 082050Z 00000KT 7SM CLR 27/24
 14nm SE A3007
KAPS 082137Z AUTO 16004KT 10SM CLR
 24nm NE 33/23 A3006 RMK AO2 LTG DSNT N
 AND NW
KPTN 082056Z AUTO 9SM -RA OVC100
 25nm W RMK AO2 TSB18E42 SLPNO P0003
 6//// FZFRANO \$
KREG 082135Z AUTO 18003KT 10SM CLR
 26nm N 31/24 A3004 RMK AO2 LTG DSNT W
 THRU NE T03050239

TAF

KHUM 081753Z 0818/0918 11009KT P6SM
 14nm SE VCTS SCT022CB BKN200 FM081900
 10007KT P6SM SHRA VCTS
 BKN050CB OVC090 TEMPO
 0820/0824 4SM TSRA BR OVC025CB
 FM090100 00000KT P6SM BKN110
 FM091600 06005KT P6SM BKN100

NOTAMs

▶ Click for the latest **NOTAMs**

NOTAMs are issued by the DoD/FAA and will open in a separate window not controlled by AirNav.

Aircraft based on the field: 11 Aircraft operations: avg 125/week *
 Single engine airplanes: 7 54% local general aviation
 Multi engine airplanes: 2 46% transient general aviation
 Helicopters: 2 * for 12-month period ending 10 August 2020

Additional Remarks

- RWY 08/26 AGRICULTURE WASHDOWN PAD 500 FT NORTH OF RWY AT MIDFLD.
- FOR CD CTC NEW ORLEANS APCH AT 504-471-4350.
- TREES 60 FT TALL; 160 FT NORTH AND SOUTH OF CNTRLN PENT THE 7:1 TRSNL SLP RWY 08.
- WILDLIFE ON OR NEAR THE RWY SAFETY AREA

Instrument Procedures

NOTE: All procedures below are presented as PDF files. If you need a reader for these files, you should [download](#) the free Adobe Reader.

NOT FOR NAVIGATION. Please procure official charts for flight.

FAA instrument procedures published for use from 14 July 2022 at 0901Z to 11 August 2022 at 0900z.

IAPs - Instrument Approach Procedures

VOR OR GPS-A

[download](#) (161KB)

NOTE: Special Take-Off Minimums/Departure Procedures apply

[download](#) (114KB)

Other nearby airports with instrument procedures:

[KHUM](#) - Houma-Terrebonne Airport (14 nm SE)

[KAPS](#) - Port of South Louisiana Executive Regional Airport (24 nm NE)

[KREG](#) - Louisiana Regional Airport (26 nm N)

[KPTN](#) - Harry P Williams Memorial Airport (26 nm W)

[KMSY](#) - Louis Armstrong New Orleans International Airport (33 nm NE)

FBO, Fuel Providers, and Aircraft Ground Support

Business Name	Contact	Services / Description	Fuel Prices	Comments
		no information available		
Golden Ranch Aviation	985-447-6124	If you are affiliated with Golden Ranch Aviation and would like to show here your services, contact info, web link, logo, and more, click here	100LL FS \$6.50 Updated 27-Jul-2022	not yet rated write
			FS=Full service	
			UPDATE PRICES	

Would you like to see your business listed on this page?

If your business provides an interesting product or service to pilots, flight crews, aircraft, or users of the Thibodaux Municipal Airport, you should consider listing it here. To start the listing process, click on the button below

[ADD YOUR BUSINESS OR SERVICE](#)

Other Pages about Thibodaux Municipal Airport

2,450,000 Results

Any time ▾

Including results for **military** airports in **Louisiana**.

Do you want results only for military airports in Louisiana ?

Military Airports In Louisiana



Louis Armstrong New Orleans International Airport

Foursquare (785) · Airport
1 Terminal Dr, Kenner · (504) 303-7500

[WEBSITE](#) [DIRECTIONS](#)

Alexandria International Airport (AEX)

Foursquare (29) · Airport terminal
1315 Billy Mitchell Blvd, Alexandria · (318) 449-3504

[WEBSITE](#) [DIRECTIONS](#)

Acadiana Regional Airport

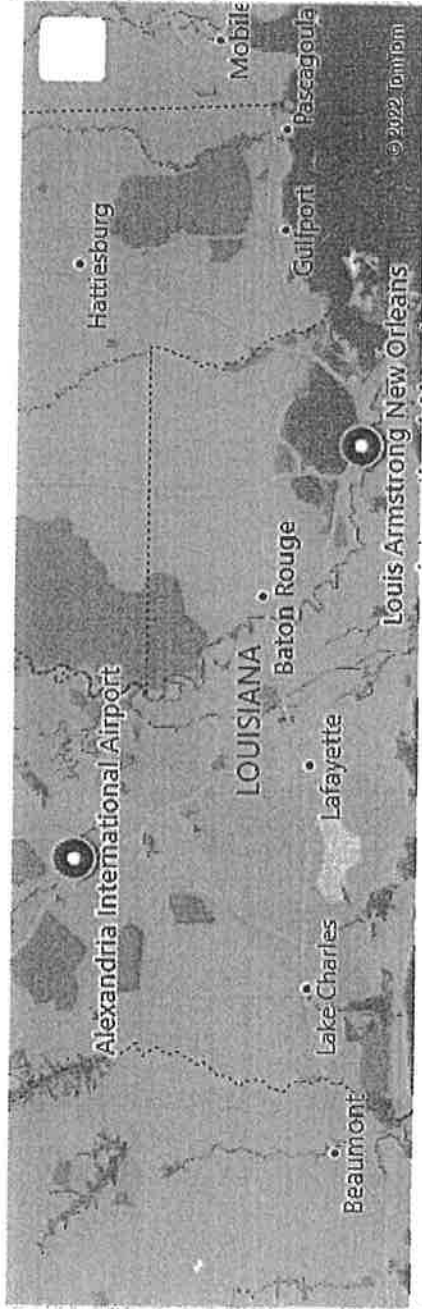
Foursquare (1) · Airport terminal
1404 Hangar Drive, New Iberia · (337) 365-7202

[WEBSITE](#) [DIRECTIONS](#)



Including results for **military airports** in Louisiana.
Do you want results only for military airports in Louisiana?

Military Airports In Louisiana



Louis Armstrong New Orleans International Airport

Foursquare (785) · Airport
900 Airline Dr, Kenner · (504) 303-7500

[WEBSITE](#)

[DIRECTIONS](#)

Alexandria International Airport

Foursquare (29) · Airport
1315 Billy Mitchell Blvd, Alexandria · (318) 449-3504

[WEBSITE](#)

[DIRECTIONS](#)

[See more results](#)

The biggest international airport in Louisiana is **Louis Armstrong New Orleans International** with passenger count 6582066 and smallest airport is Lake Charles Regional with passenger count is 58122.



Home » North America » Closest airport to Thibodaux, LA

Nearest Airport to Thibodaux, LA, United States

Closest airport to **Thibodaux** is Louis Armstrong New Orleans International Airport (MSY). Distance from Louis Armstrong New Orleans International Airport to Thibodaux is 36.5 miles / 58.8 kilometers.

Deluxe Inn & Suites Morgan City

Call Us for Details

We Are an Excellent Choice for Travelers Seeking Relaxation and Rejuvenation.

X
A

Directions

Website

Thibodaux, LA – Airports nearby

1. Louis Armstrong New Orleans International Airport (36.5 miles / 58.8 kilometers)
2. Baton Rouge Metropolitan Airport (54.6 miles / 87.9 kilometers)
3. Lafayette Regional Airport (75.3 miles / 121.2 kilometers)
4. Gulfport-Biloxi International Airport (113.1 miles / 182.0 kilometers)

Louis Armstrong New Orleans International Airport (MSY)

Louis Armstrong New Orleans International Airport is located approximately 1.0 miles / 1.6 kilometers west of Kenner and about 5.7 miles / 9.2 kilometers west of Metairie
IATA airport code is MSY.

Distance from Lafayette Regional Airport to Thibodaux is 75.3 miles / 121.2 kilometers. Gulfport-Biloxi International Airport is located approximately 2.3 miles / 3.7 kilometers southeast of Lafayette and about 17.2 miles / 27.7 kilometers northwest of New Iberia. IATA airport code is LFT.

Gulfport-Biloxi International Airport (GPT)

Distance from Gulfport-Biloxi International Airport to Thibodaux is 113.1 miles / 182.0 kilometers. Gulfport-Biloxi International Airport is located approximately 1.5 miles / 2.3 kilometers east of West Gulfport and about 3.1 miles / 4.9 kilometers northeast of Gulfport. IATA airport code is GPT.

Deluxe Inn & Suites Morgan City

Our Hotel

Our Motel Is Friendly and Our Rooms Are Comfortable. Contact Us with Any Questions Now.



[Directions](#)

[Website](#)

Map of airports near Thibodaux

Show Map

Airport

	Distance (miles)	Distance (km)
A Louis Armstrong New Orleans International Airport (MSY)	36.5	58.8
B Baton Rouge Metropolitan Airport (BTR)	54.6	87.9
C Lafayette Regional Airport (LFT)	75.3	121.2
<input checked="" type="checkbox"/> Gulfport-Biloxi International Airport (GPT)	113.1	182.0

2,020,000 Results Any time

Convert units

Length

2500 = 0.47348485

Foot Mile

FORMULA divide the length value by 5280

Related searches

- how far is 1500 ft
- 1 mile is how many feet
- kilometers to feet to miles
- feet to miles calculator
- convert feet to miles
- linear feet to miles
- 3.1 miles how many feet
- feet to mile

2500 Feet to Miles Conversion - Convert 2500 Feet to ...

<https://www.theunitconverter.com/feet-to-miles...>

9 rows - You are currently converting Distance and Length units from **Feet** to **Miles**. **2500 Feet** (ft)

	MILLIMETER (MM)	CENTIMETER (CM)	INCH (IN)	YARD (YD)
1 millimeter (mm)	1	0.1	0.03937	0.0010936
1 centimeter (cm)	10	1	0.3937	0.010936
1 meter (m)	1000	100	39.37	1.0936
1 kilometer (km)	1000000	100000	39370	1093.6

See all 9 rows on www.theunitconverter.com

Convert 2,500 Feet to Miles - CalculateMe.com

<https://www.calculateme.com/length/feet/to-miles/2500>

26 rows - **Feet to Miles** Conversions. (some results rounded) ft. mi. 2,500. 0.47348. 2,510. ...

FT	MI
2,500	0.47348
2,510	0.47538
2,520	0.47727
2,530	0.47917

See all 26 rows on www.calculateme.com

What is 2500 Feet in Miles? Convert 2500 ft to mi

<https://whatisconvert.com/2500-feet-in-miles>

To calculate **2500 Feet** to the corresponding value in Miles, multiply the quantity in Feet by 0.00018939393939394 (conversion factor). In this case we should multiply **2500 Feet** by...

Convert 2500 feet to miles - ConvertNation

convernation.com/2500-feet-to-miles

Convert **2500 feet to miles**. If you want to convert **2500 ft to mi** or to calculate how much **2500 feet** is in **miles** you can use our free feet to miles converter: **2500 feet** = 0.47 miles.

Convert 2,500 Feet to Miles - DollarTimes

<https://www.dollartimes.com/calculate/length/feet/miles/2500>

Type in 2500.5 for **2500** and a half, 2500.25 for 2500 and a quarter, 2500.75 for 2500 and three quarters, etc... How many? **Feet to Miles**. Conversion chart from **ft to mi**. Note: results are...

how far is 2500 feet in miles - Lisbdnet.com

984,000 Results Any time

Convert units

Length

15000 = 2.84090909

Foot Mile

FORMULA divide the length value by 5280

Related searches

- how many feet in a mile
- how long is a 20k
- how far is a 1000 feet
- how many feet in a quarter mile
- how far is 1500 ft
- how far is 500 feet
- steps in a mile chart
- 1 mile is how many feet

15000 feet to miles - coolconversion.com

<https://coolconversion.com/lenght/15000-feet-to-mile>

7 rows · Formula: multiply the value in feet by the conversion factor '0.00018939393939394'. So, 15000 ...

8000 FEET	1.52 MILES
12000 feet	2.27 miles
13000 feet	2.46 miles
14000 feet	2.65 miles
15000 feet	2.84 miles

See all 7 rows on coolconversion.com

Convert 15000 feet to miles - ConvertNation

convertnation.com/15000-feet-to-miles

If you want to convert 15000 ft to mi or to calculate how much 15000 feet is in miles you can use our free feet to miles converter: 15000 feet = 2.84 miles.

91 Feet to Miles · 15000 Feet to Kilometers · 15000 Feet to Centimeters

How many miles in 15000 feet? - Answers

https://math.answers.com/Q/How_many_miles_in_15000_feet

Feb 26, 2012 · A mile is 5280 feet, so 3 miles is 15840 ft. 5000 yards (at 3 feet per yard) is 15000 ft. 3 miles is longer. 840 feet longer.

Convert feet to miles - Length / Distance Conversions

https://www.checkyourmath.com/convert/length/feet_miles.php

29 rows · Task: Convert 15,000 feet to miles (show work) Formula: feet ÷ 5,280 = miles

Calculations: ...

	FEET (FT)	MILES (MI)
miles (mi)	1 feet	0.00018939 miles
0.00018939 miles	2 feet	0.00037879 miles
0.00037879 miles	3 feet	0.00056818 miles
0.00056818 miles	4 feet	0.00075758 miles

See all 29 rows on www.checkyourmath.com

15000 square feet equals how many miles? - Answers

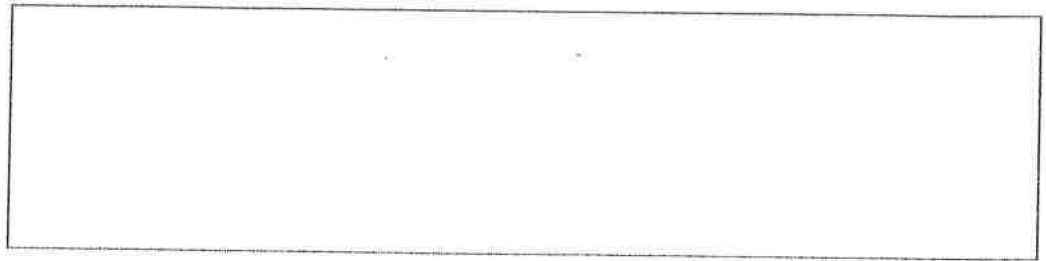
https://www.answers.com/Q/15000_square_feet_equals_how_many_miles

Q: 15000 square feet equals how many miles?

A: 15,000 feet / 5280 MI = 2.84 ____ = 2 mls & 84 ft

- A 1229 Canal Blvd, Thibodaux, LA 70301
- B Thibodaux Municipal Airport

10 min, 3.7 miles
 Light traffic (Leave at 4:27 PM)
 Via LA-20, Horseshoe Rd
 Local roads

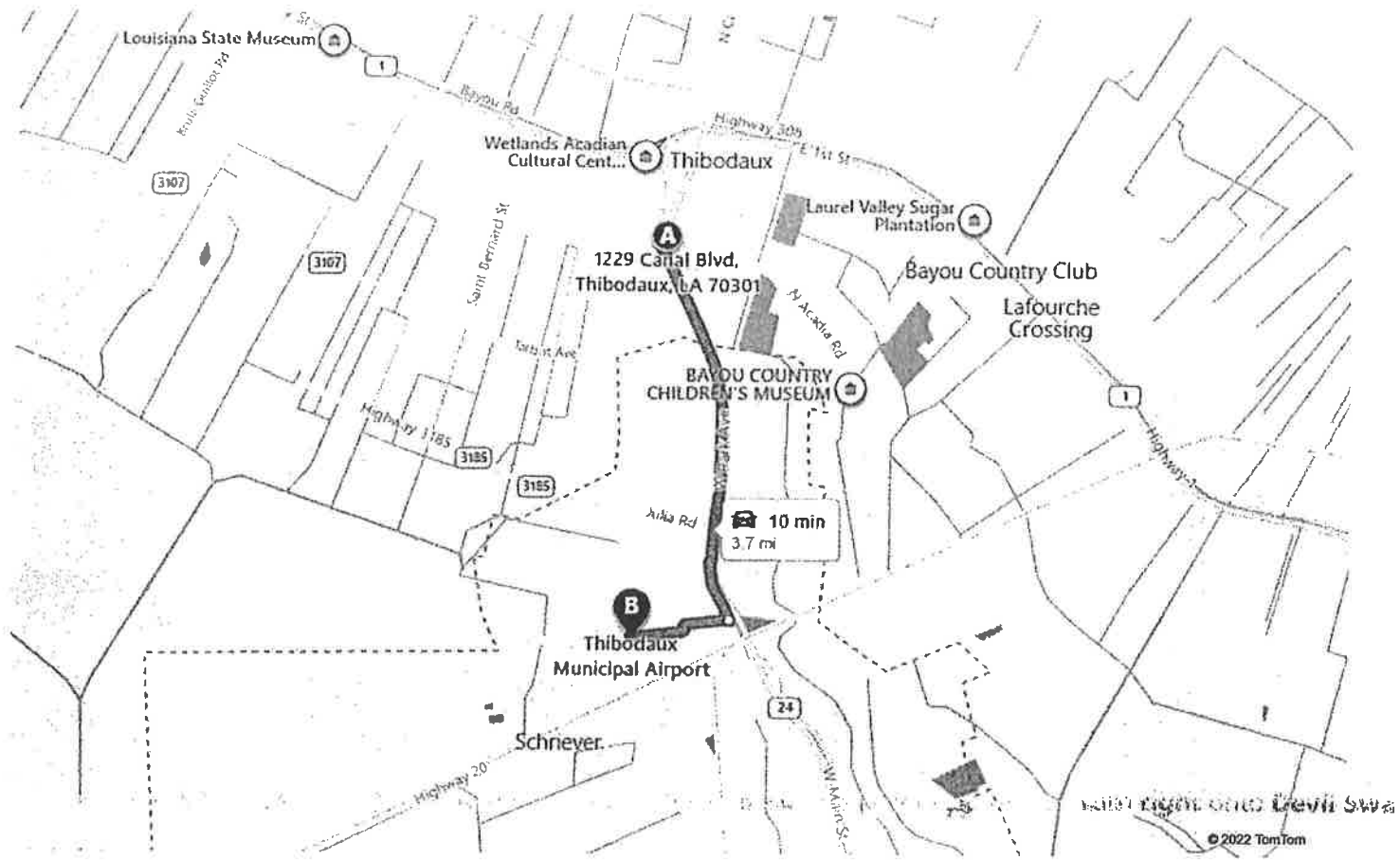


A 1229 Canal Blvd, Thibodaux, LA 70301

↑	1. Head northeast on LA-20 / Canal Blvd toward E 12th St	299 ft
↻	2. Make a U-turn Pass Thibodaux Fair Grounds OTB Casino in 0.8 mi	2.4 mi
↘	3. Turn right onto Devil Swamp Rd , then immediately turn left onto Old Schriever Hwy	0.4 mi
↘	4. Turn right onto Horseshoe Rd	0.4 mi
↘	5. Turn right to stay on Horseshoe Rd	0.4 mi
↘	6. Turn right onto Thibodaux Airport	26 ft
↑	7. Road name changes to Airport Rd	72 ft
	8. Arrive at Airport Rd on the right The last intersection before your destination is Horseshoe Rd	

B Thibodaux Municipal Airport

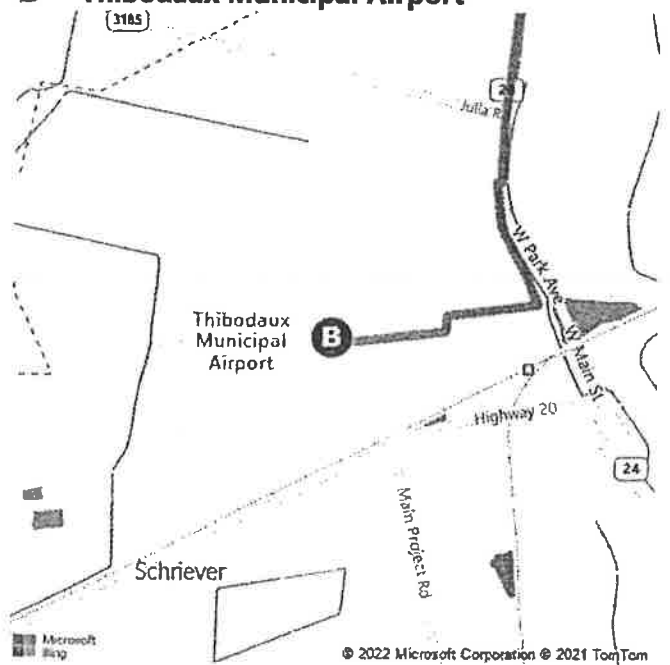
E



A 1229 Canal Blvd, Thibodaux, LA 70301



B Thibodaux Municipal Airport



These directions are subject to the Microsoft® Service Agreement and are for informational purposes only. No guarantee is made regarding their completeness or accuracy. Construction projects, traffic, or other events may cause actual conditions to differ from these results. Map and traffic data © 2022 TomTom.